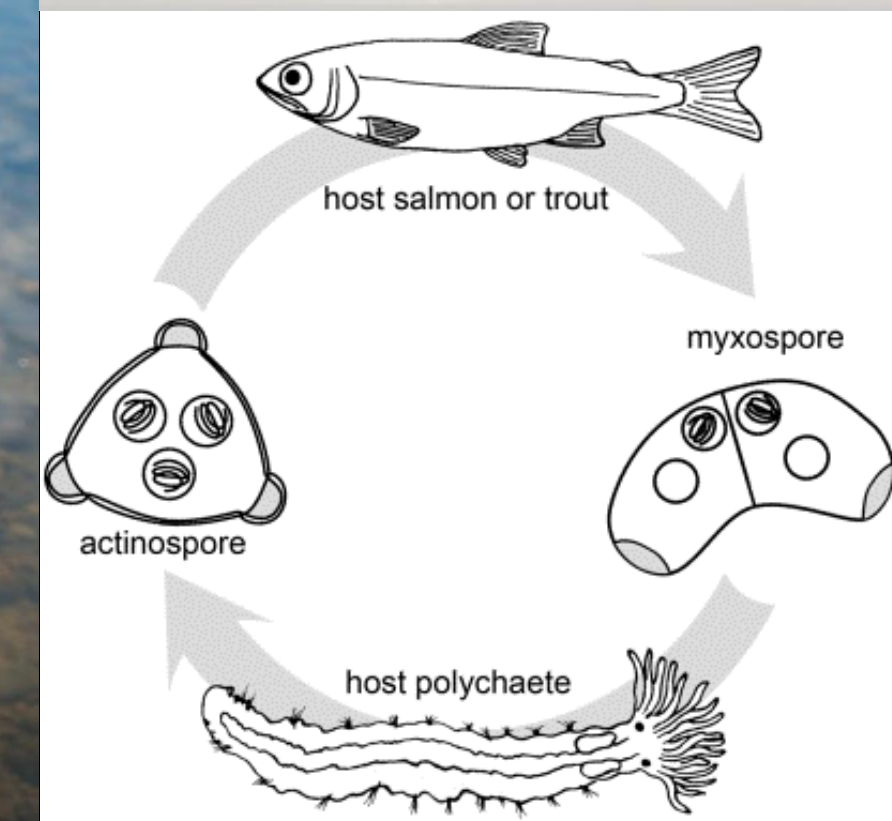
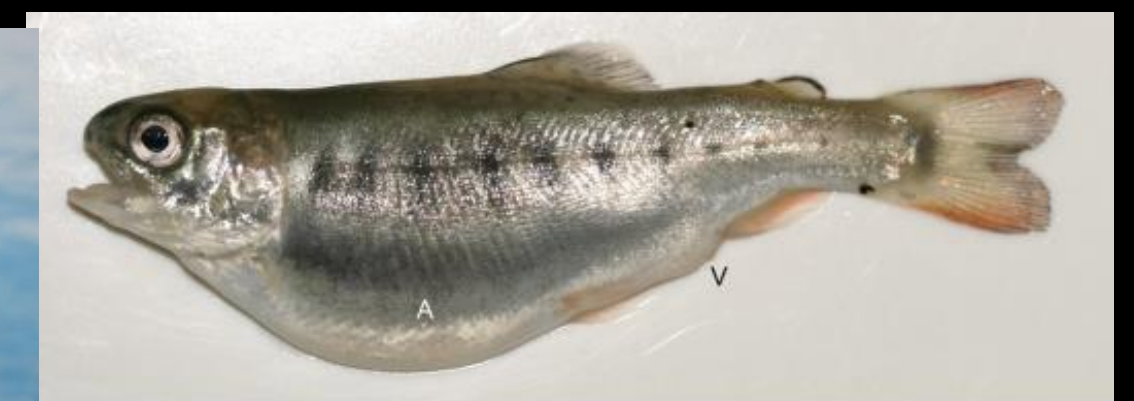
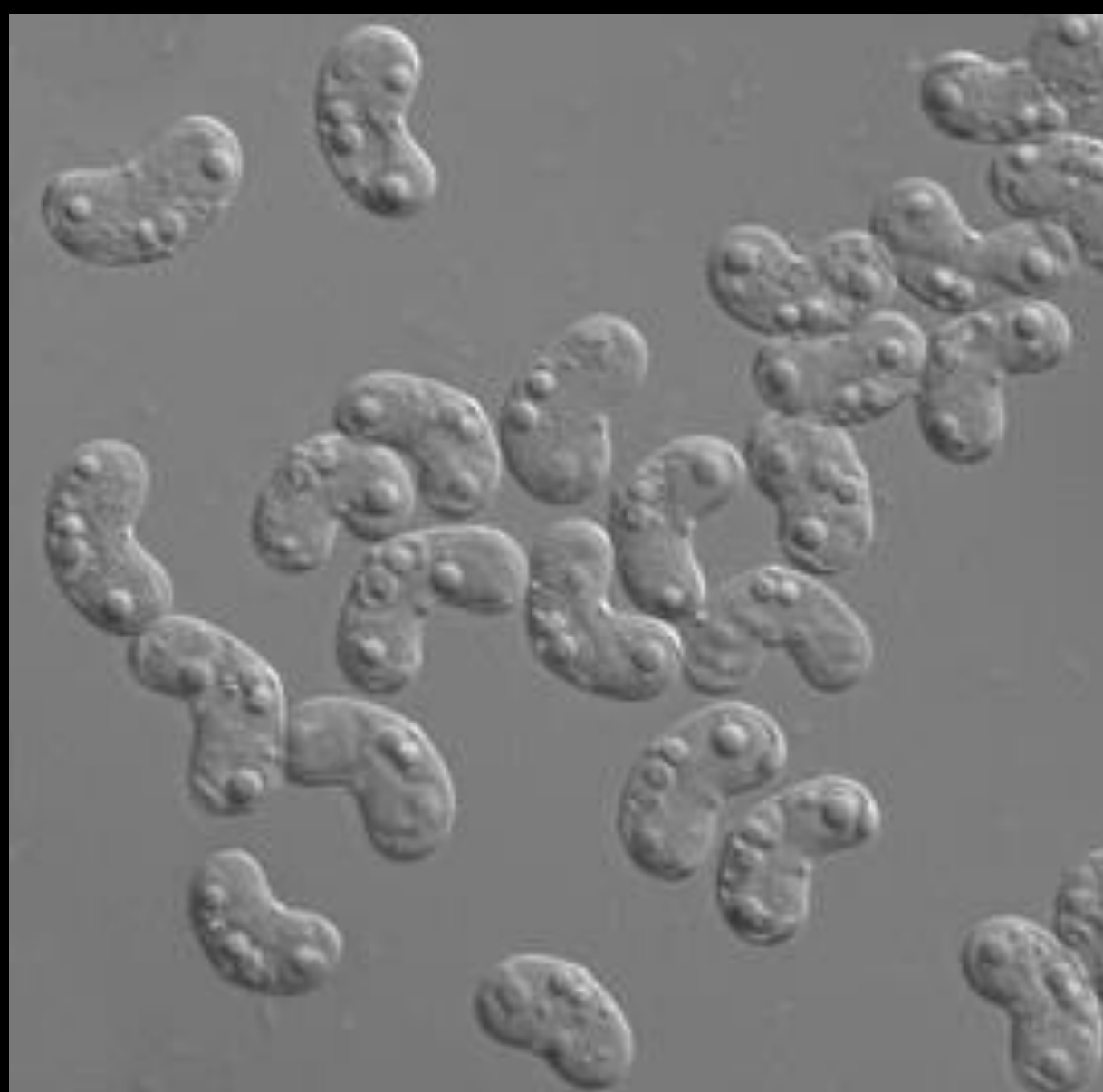


Ceratonova shasta

This myxozan parasite (formerly *Ceratomyxa shasta*) causes enteronecrosis “gut rot” in salmon and trout. *C. shasta* is native to the Pacific Northwest and can cause disease outbreaks in trout hatcheries and in free-ranging Chinook and coho salmon under conditions of environmental stress.



Professor Jerri Bartholomew (OSU Microbiology) solved the complex *C. shasta* life cycle and identified the infectious agent for fishes. The cycle is now maintained in the AAHL and enables experiments on: fish susceptibility, parasite genetics, the influence of temperature and flow on infection dynamics.