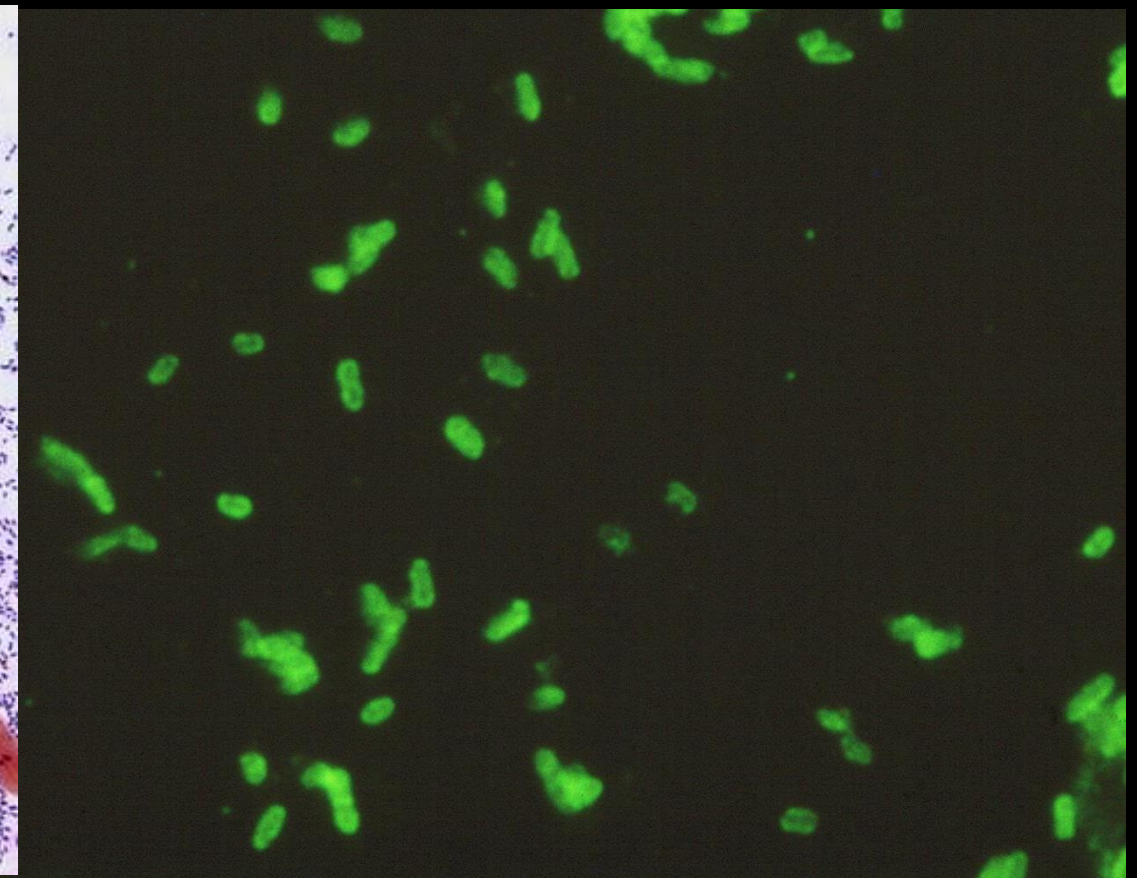
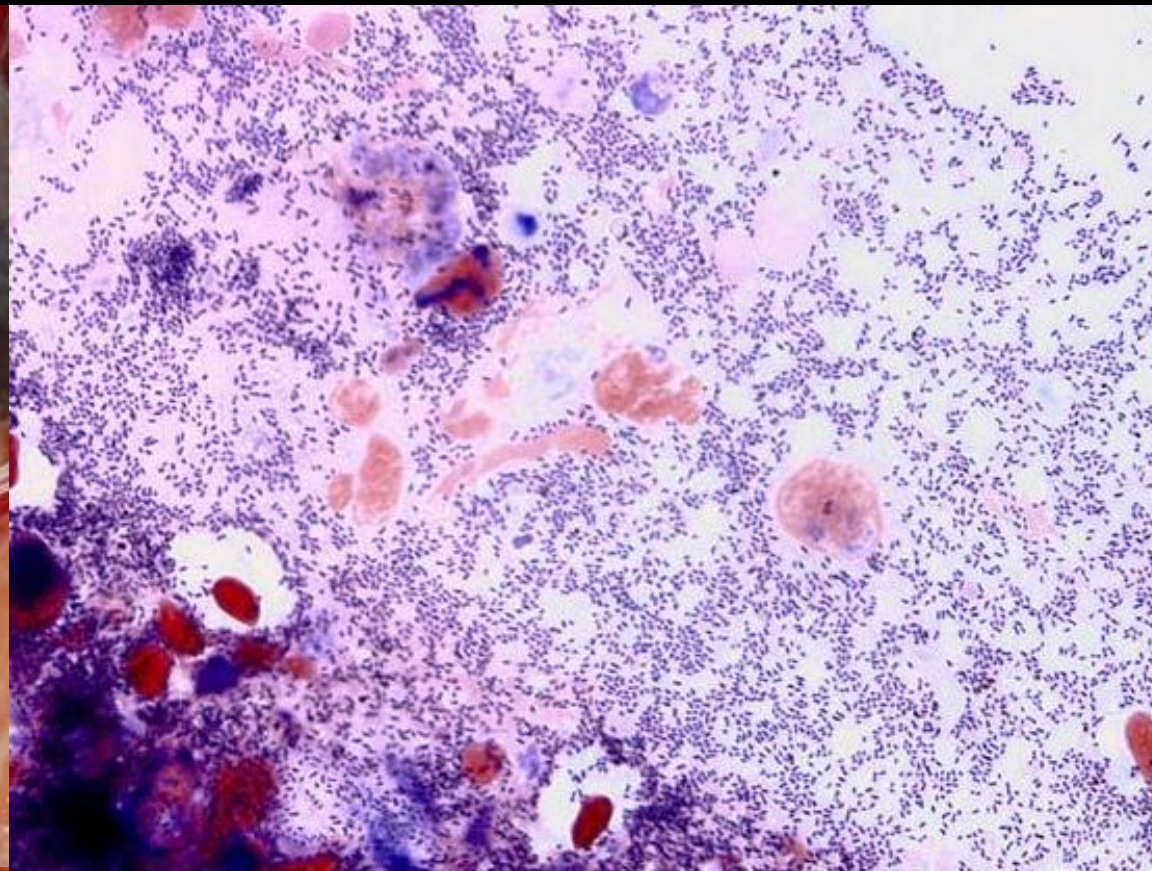


# BKD



BKD (Bacterial Kidney Disease) is a serious infection of salmon caused by the bacterium *Renibacterium salmoninarum*. Disease signs include characteristic off-white lesions in the kidney, that usually progress to become a systemic infection that kills the host. BKD can be transmitted from the adult female via infected eggs to the progeny. BKD has impacted many salmon and trout populations.



ODFW, in collaboration with OSU, has developed, tested and implemented screening methods for detecting *Renibacterium* in adult salmon: Culling infected eggs during hatchery spawning has been one of the most effective tools in reducing levels of the disease in juvenile salmon.